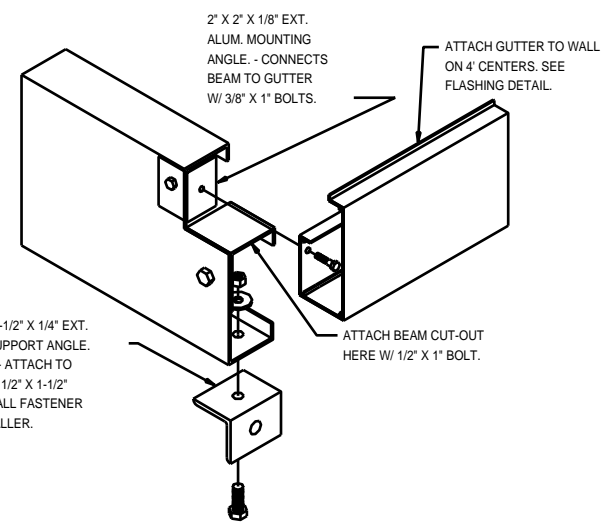


GUTTER WALL-ATTACHED ON 4' CENTERS. WALL-FASTENERS BY OTHERS.

GUTTER/BEAM CLIP ANGLE ATTACHED W/ 3/8" X 1" BOLT.

1/4" EXT. ALUM. WALL-ATTACH ANGLE. ATTACHED TO DRAIN BEAM W/ 1/2" BOLT. WALL FASTENER - BY OTHERS.

**WALL-ATTACH DETAIL**  
( DRAIN BEAM & GUTTER )



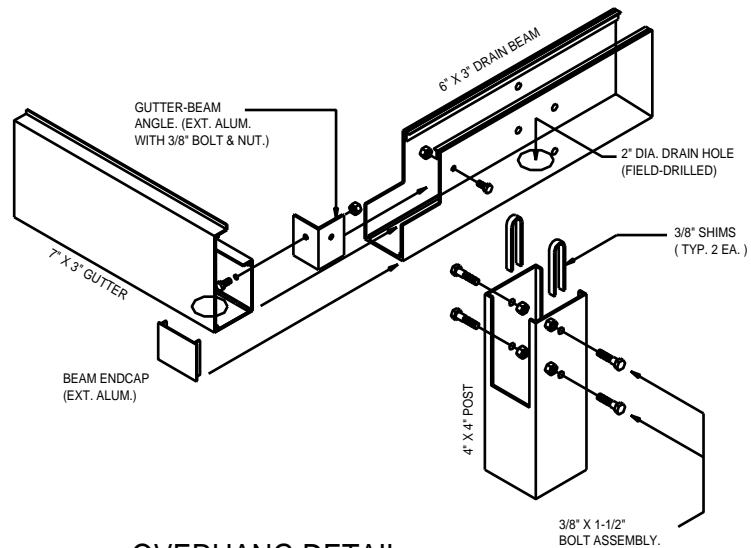
2" X 2" X 1/8" EXT. ALUM. MOUNTING ANGLE. - CONNECTS BEAM TO GUTTER W/ 3/8" X 1" BOLTS.

ATTACH GUTTER TO WALL ON 4' CENTERS. SEE FLASHING DETAIL.

ATTACH BEAM CUT-OUT HERE W/ 1/2" X 1" BOLT.

2-1/2" X 2-1/2" X 1/4" EXT. ALUM. SUPPORT ANGLE. 3" LONG - ATTACH TO BEAM W/ 1/2" X 1-1/2" BOLT. WALL FASTENER BY INSTALLER.

**WALL-ATTACH DETAIL**  
( 10" C-BEAM & GUTTER )



GUTTER-BEAM ANGLE. (EXT. ALUM. WITH 3/8" BOLT & NUT.)

6" X 3" DRAIN BEAM

2" DIA. DRAIN HOLE (FIELD-DRILLED)

3/8" SHIMS (TYP. 2 EA.)

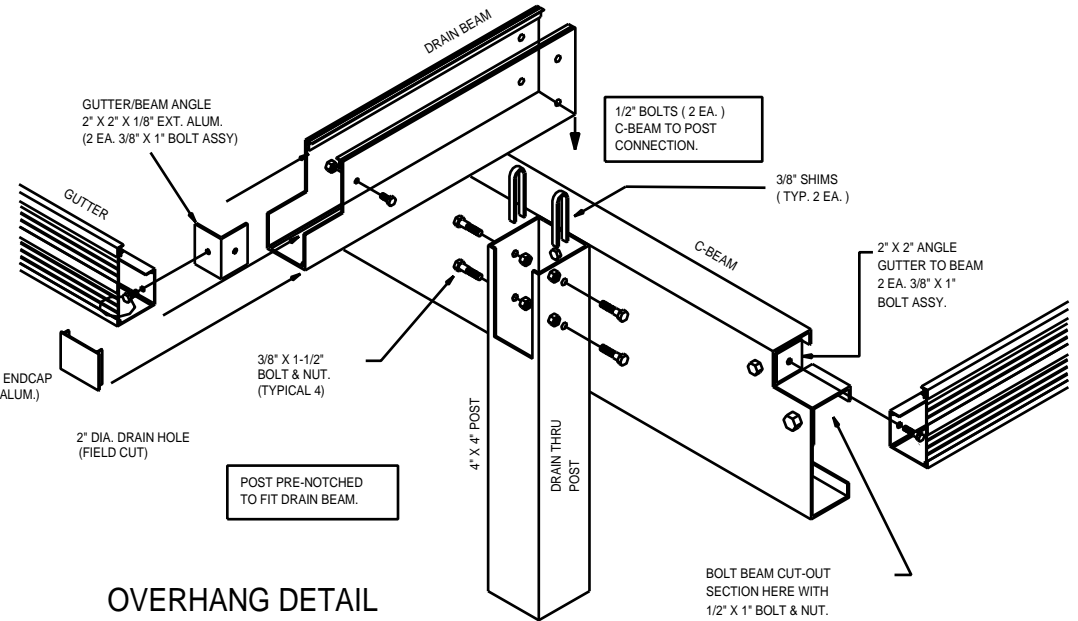
7" X 3" GUTTER

BEAM ENDCAP (EXT. ALUM.)

4" X 4" POST

3/8" X 1-1/2" BOLT ASSEMBLY.

**OVERHANG DETAIL**  
( USING DRAIN BEAM )



GUTTER/BEAM ANGLE 2" X 2" X 1/8" EXT. ALUM. (2 EA. 3/8" X 1" BOLT ASSY)

1/2" BOLTS ( 2 EA. ) C-BEAM TO POST CONNECTION.

3/8" SHIMS (TYP. 2 EA.)

BEAM ENDCAP (EXT. ALUM.)

2" DIA. DRAIN HOLE (FIELD CUT)

3/8" X 1-1/2" BOLT & NUT. (TYPICAL 4)

POST PRE-NOTCHED TO FIT DRAIN BEAM.

4" X 4" POST

DRAIN THRU POST

2" X 2" ANGLE GUTTER TO BEAM 2 EA. 3/8" X 1" BOLT ASSY.

BOLT BEAM CUT-OUT SECTION HERE WITH 1/2" X 1" BOLT & NUT.

**OVERHANG DETAIL**  
( USING DRAIN BEAM & C-BEAM )